



# GMT MONTHLY MEMBERSHIP PROGRESS REPORT

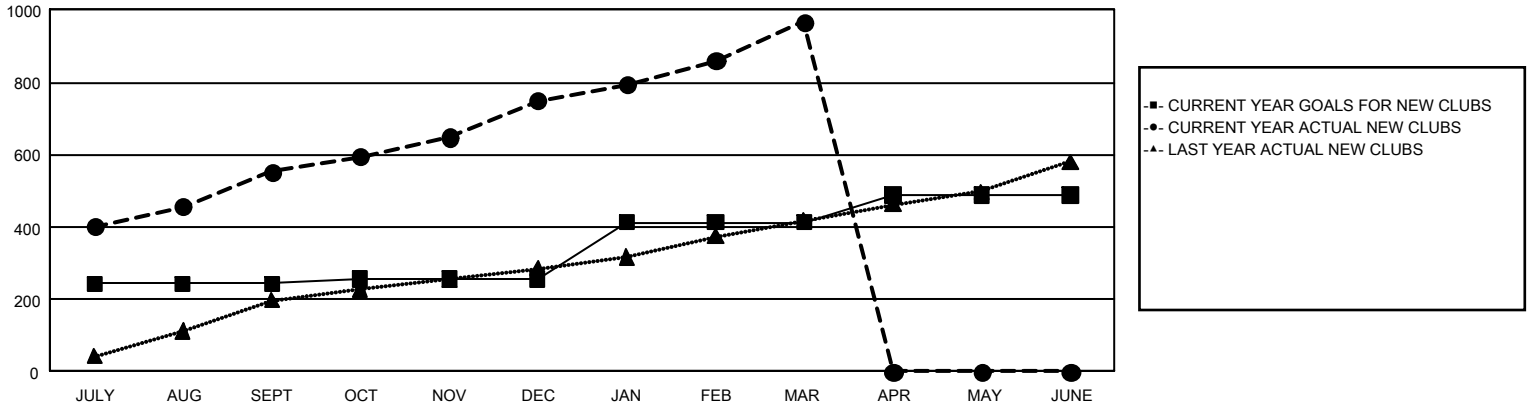
## GAT Constitutional Area 6 - India

Results as of: 3/31/2026

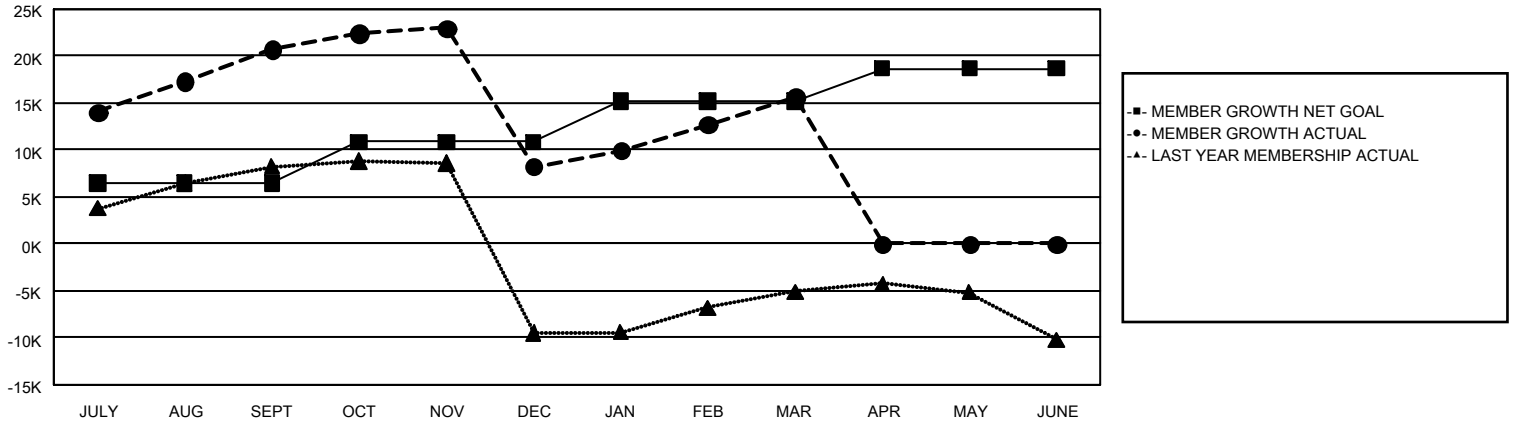
REPORT DOES NOT INCLUDE CLUBS IN UNDISTRICTED AREAS.

Clubs				Members			
RESULTS FOR 2025-2026				RESULTS FOR 2025-2026			
QUARTER	NEW CLUB GOAL	NEW CLUBS	DROPPED CLUBS	QUARTER	MEMBER GROWTH NET GOAL	MEMBER GROWTH ACTUAL	DROPPED MEMBERS ACTUAL (including transfers)
JULY/AUG/SEPT	244	553	106	JULY/AUG/SEPT	6,424	31,466	8,520
OCT/NOV/DEC	12	197	404	OCT/NOV/DEC	4,410	17,654	27,818
JAN/FEB/MAR	157	216	80	JAN/FEB/MAR	4,362	13,952	4,331
APR/MAY/JUNE	76	0	0	APR/MAY/JUNE	3,485	0	0

**GOALS AND ACTUAL NEW CLUBS CUMULATIVE**



**GOALS AND ACTUAL MEMBERS CUMULATIVE**



<b>DROPPED CLUBS: 590</b>	<b>6,237 CLUBS OF 9,500 ADDED 1 OR MORE NEW MEMBERS</b>	<b>GENDER DISTRIBUTION</b> MALE                    219,213 (73.49%) FEMALE                   78,997 (26.48%)
<b><u>DROPPED MEMBERS</u></b> DECEASED                    616 CLUB CANCELLED            17,836 OTHER                            22,142 <hr/> <b>TOTAL                            40,594</b>	<a href="#">CLICK HERE FOR CUMULATIVE MEMBERSHIP DATA</a>	TOTAL FAMILY UNIT MEMBERS            102,183  FAMILY MEMBERS PAYING HALF DUES            60,134